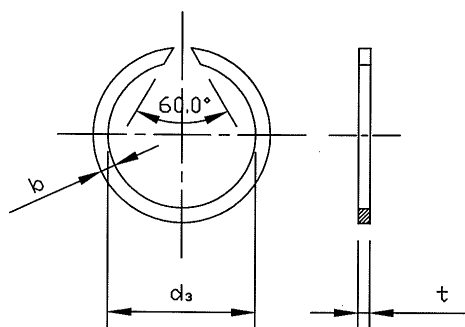
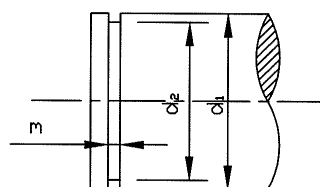


軸用同心トメワ WR

HASHIMA



適用する軸



$$m = 0.1 + t \text{ (最大)}$$

単位:mm

呼び径	止 め 輪 寸 法						d ₂ 寸法
	d ₁	d ₃	b		t		
	寸法	最大	寸法	公差	寸法	公差	
WR - 6	6	5.6	1.1	±0.08	0.7	±0.06	5.7
7	7	6.5	1.2		6.7		
8	8	7.4	1.3		1.0		7.6
9	9	8.4					8.6
10	10	9.4					9.6
11	11	10.2	1.5		1.2		10.5
12	12	11.2					11.5
13	13	12.2					12.5
14	14	13.1					13.5
15	15	14.0					14.4
16	16	15.0					15.4
17	17	16.0	1.75		1.5		16.4
18	18	17.0					17.4
19	19	17.9					18.4
20	20	18.7					19.2
21	21	19.7		20.2			
22	22	20.7		21.2			
23	23	21.7		22.2			
24	24	22.5		23.0			
25	25	23.5		24.0			
26	26	24.5		25.0			
28	28	26.5	2.3	1.5	27.0		
29	29	27.5			28.0		
30	30	28.5			29.0		
32	32	30.2			30.8		
35	35	33.2			33.8		
37	37	35.2			35.8		
38	38	36.2			36.8		
40	40	37.8			38.5		
42	42	39.8			40.5		
43	43	40.8			41.5		
45	45	42.8			43.5		
47	47	44.8			45.5		
48	48	45.8			46.5		
50	50	47.8			48.5		
52	52	49.8			50.5		
55	55	52.6	53.5				
58	58	55.6	56.5				
60	60	57.6	58.5				
61	61	58.6	59.5				
62	62	59.6	60.5				
63	63	60.6	61.5				
64	64	61.6	62.5				
65	65	62.6	63.5				

軸用同心トメワ WR

HASHIMA

単位:mm

呼び径	止 め 輪 寸 法						d ₂ 寸法
	d ₁	d ₃	b		t		
	寸法	最大	寸法	公差	寸法	公差	
WR - 68	68	65.4	2.8		2.0		66.2
70	70	67.8					68.2
72	72	69.4					70.2
73	73	70.4					71.2
75	75	72.4	3.4				73.2
80	80	77.4					78.2
85	85	82.0					83.0
90	90	87.0					88.0
95	95	92.0					93.0
100	100	97.0					98.0
105	105	101.7					102.7
110	110	106.7					107.7
115	115	111.7					112.7
120	120	116.7					117.7
125	125	121.7	4.0				122.7
130	130	126.7					127.7
135	135	131.6					132.4
140	140	136.6					137.4
145	145	141.6					142.4
150	150	146.6					147.4
155	155	151.6					152.4
160	160	156.6					157.4
165	165	161.6					162.4
170	170	166.6					167.4
175	175	171.6	5.0	±0.08		±0.06	172.4
180	180	175.6					177.0
185	185	180.6					182.0
190	190	185.6					187.0
195	195	190.6					192.0
200	200	195.6					197.0
210	210	205.6					207.0
220	220	215.6					217.0
225	225	220.6					222.0
230	230	225.6					227.0
240	240	235.6	7.5				237.0
250	250	245.6					247.0
260	260	253.0					255.0
265	265	258.0					260.0
270	270	263.0					265.0
280	280	273.0					275.0
285	285	278.0					280.0
290	290	283.0					285.0
300	300	293.0					295.0
305	305	298.0					300.0
310	310	303.0	4.0				305.0
320	320	313.0					315.0
330	330	323.0					325.0
340	340	333.0					335.0
350	350	343.0					345.0
360	360	353.0					355.0
370	370	363.0					365.0
380	380	373.0					375.0
390	390	383.0					385.0
400	400	393.0					395.0

材質:ばね用鋼 硬さ:40~50HRC 表面処理:TC(テンパーカラー)